



2/11 Onslow Street, Rose Bay

2 

2 

2 

Unique Family Haven, Peaceful And Private Setting With
DLUG

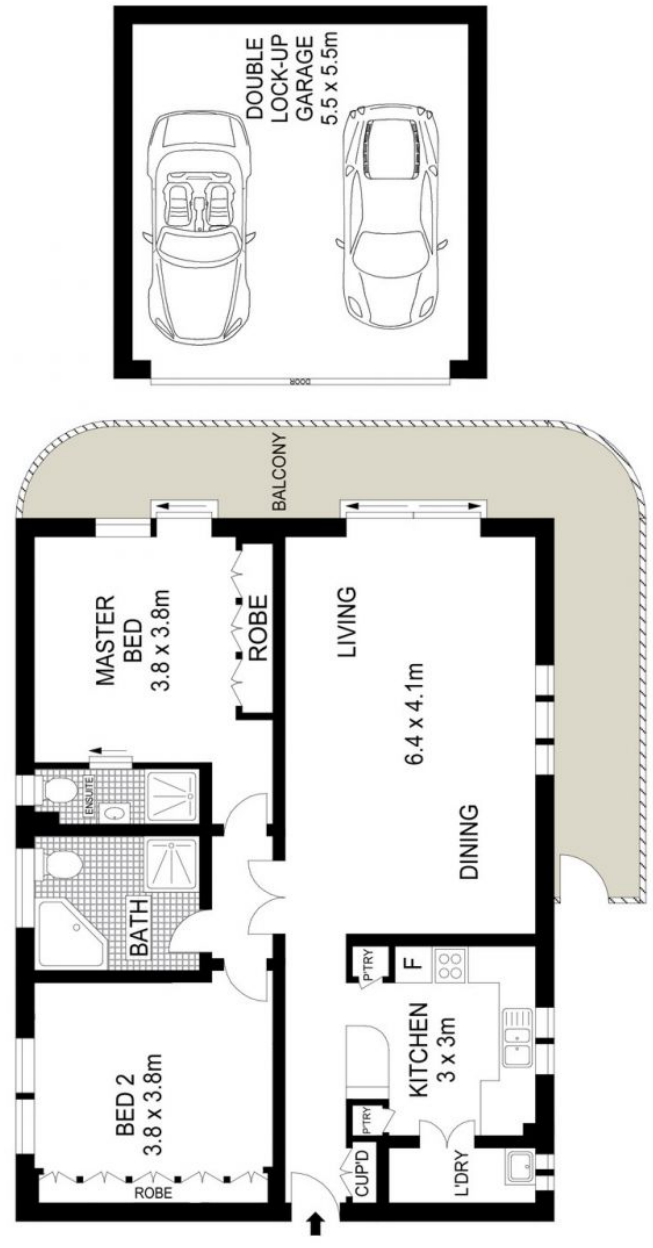
A peaceful and private setting to the rear of a boutique block of six creates a sanctuary like feeling in this oversized two-bedroom apartment. Located in a leafy street on the border of North Bondi and Rose Bay, updated interiors open to a huge wraparound terrace encouraging a relaxed indoor/outdoor lifestyle. Perfect for families and entertaining, it offers an impressive approx. 105sqm of living space within easy walking distance of village shops, restaurants, cafes and CBD buses.

Desirable ground floor proportions in a well-regarded street
Generous open plan design, combined living and dining areas
Sheltered wraparound balcony with direct garden access
Attractively bright kitchen fitted with modern appliances
Double sized bedrooms with built-ins and sunlit windows

SOLD

View
As advertised or
By appointment

Joshua Allen
0404 184 158



Scale in metres. Indicative only. Dimensions are approximate. All information contained herein is gathered from sources we believe to be reliable. However we cannot guarantee its accuracy and interested persons should rely on their own enquiries.