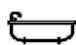




43 Figtree Avenue, Randwick

4 

2 

2 

Resort Style Home in Quiet Cul-de-sac Near Queens Park

Enviably positioned on a deep & level block at the quiet cul-de-sac end of a highly sought after tree-lined avenue, this large two-level family home is moments from Queens Park and Centennial Park.

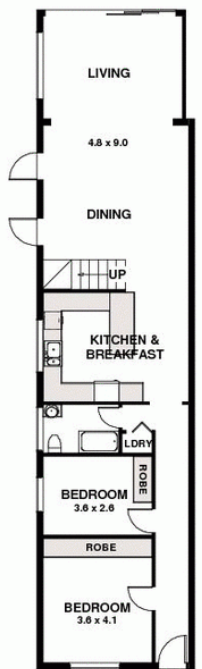
Renovated and extended for modern family living. Blending classic period features with contemporary style, it features big bedrooms, a large open-plan gas kitchen and a huge living & dining area flowing to side and rear courtyard gardens & an outdoor entertainment pavilion.

LEASED

View
As advertised or
By appointment



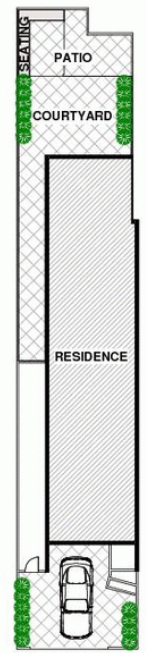
43 Figtree Avenue
RANDWICK NORTH



GROUND FLOOR



FIRST FLOOR



SITE PLAN
(NOT TO SAME SCALE)

PLAN FOR PROMOTIONAL PURPOSES.
LAYOUT/ DIMENSIONS ARE APPROX.
NO LIABILITY WILL BE ACCEPTED.