
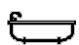





6/134-142 Edgecliff Road, Woollahra

1  1  0 

Idyllic lifestyle offering in Art Deco block

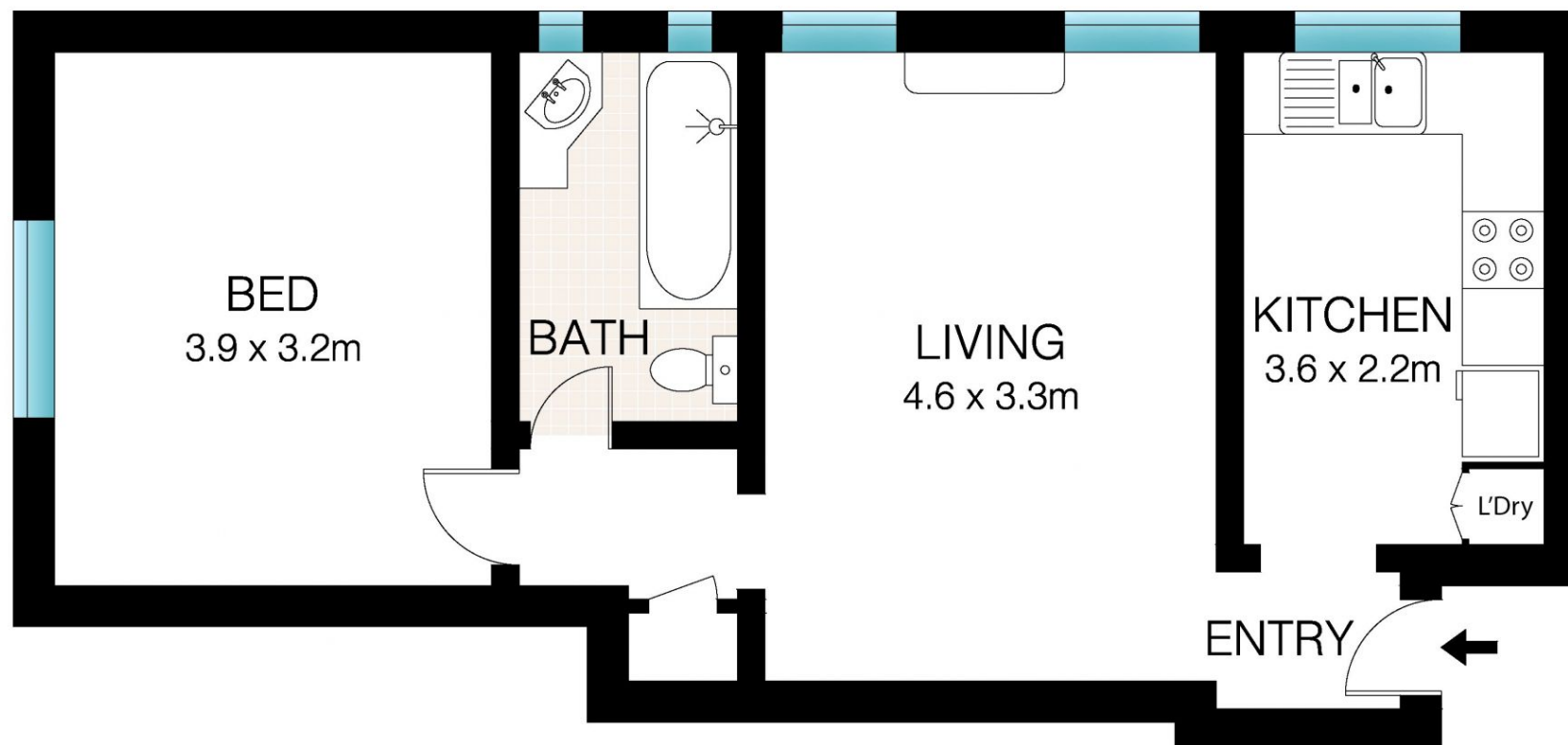
Promising lifestyle excellence in a walk-to-everywhere setting, this recently refreshed apartment provides an idyllic offering of space, peace and privacy. Open to the north and flooded with natural light, it reveals an oversized layout modern dine-in kitchen with gas appliances. It is positioned in a charming Art Deco block of 7, a stroll to Bondi Junction, Queen Street's gourmet shops, eateries and cafes.

- Oversized design with zoned living/dining areas
- Wide scenic windows, leafy outlooks, natural light
- Bedroom with built-in wardrobes, freshly painted
- Move in and enjoy, scope to add further value
- Stylish bathroom, soaring ceilings, polished floor boards
- Walk to Bondi Junction, transport, Woollahra Village, Centennial Park, city buses

SOLD

View
As advertised or
By appointment

Joshua Allen
0404 184 158



SECOND FLOOR



INT: 46m²



This Floor Plan was prepared by WWW.CRYINGOUTLOUD.COM.AU for illustration purposes only. This document does not constitute any part of an offer or contract. Dimensions are approximate only. Copyright © 2017 Crying Out Loud. All Rights Reserved.

Unit 6/138 Edgecliff Rd, Woollahra