



4/5-11 Boundary Street, Darlinghurst

4  3  2 

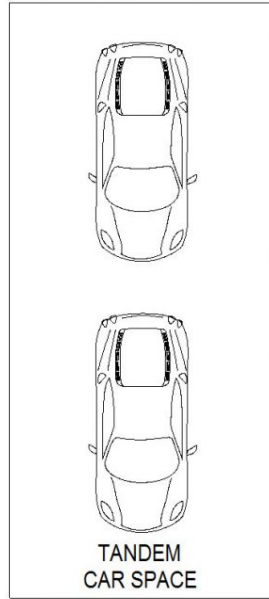
## Spacious Townhouse-style 3-Level Home

An exquisite townhouse-style home set in the elegant "Belgrave Court", this 4-bed residence offers a superb indoor-outdoor lifestyle living in a prime near-harbour precinct. Set over 3 levels and boasting spacious modern interiors, this lovely haven is highlighted by a sun-soaked living and dining area. This residence represents ultra-convenient living. In a building featuring pool and entertaining cabana, and just minutes from Potts Point and Paddington, this home ticks every box for deluxe inner-east living.

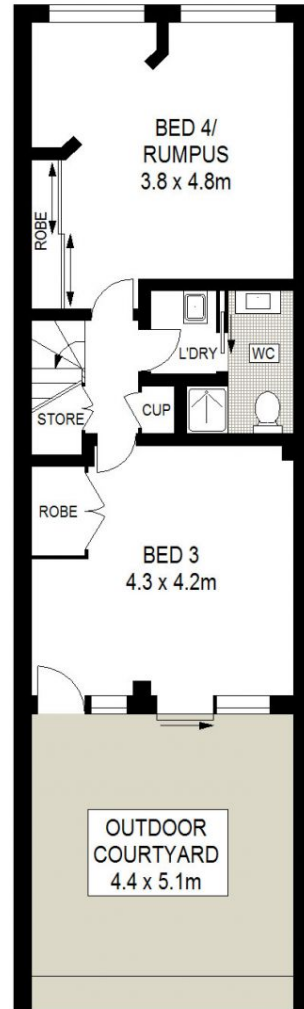
SOLD

View  
As advertised or  
By appointment

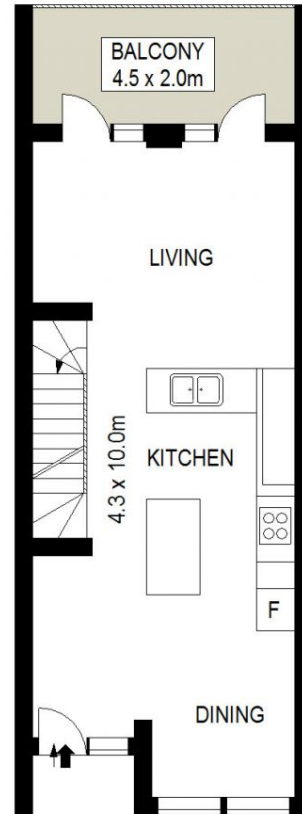
Joshua Allen  
0404 184 158



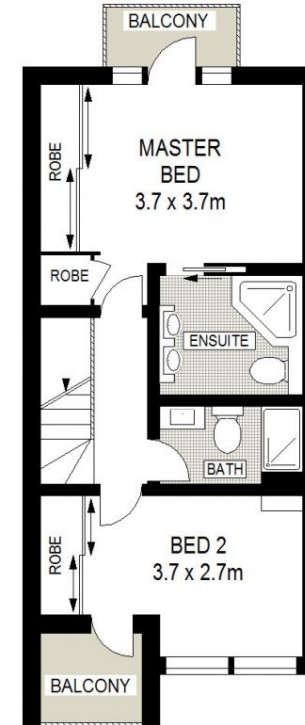
LOWER LEVEL



GROUND LEVEL



ENTRY LEVEL



LEVEL TWO



Scale in metres. Indicative only. Dimensions are approximate. All information contained herein is gathered from sources we believe to be reliable. However we cannot guarantee its accuracy and interested persons should rely on their own enquiries.

