



18B Harris Street, Paddington

3 

2 

1 

Modern Three Bedroom Home in Heart Of Paddington

Very few homes enjoy the privilege of this coveted, tightly held inner city bushland location. Set amongst a cluster of homes adjoining the tranquil sanctuary of Trumper Park this sophisticated, beautifully appointed contemporary residence is built around a central open air atrium that is bounded by walls of ceiling height windows and overlooked by gallery style living and entertaining areas.

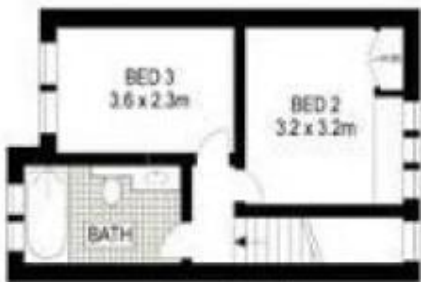
Features:

LEASED

View
As advertised or
By appointment

Joshua Allen
0404 184 158

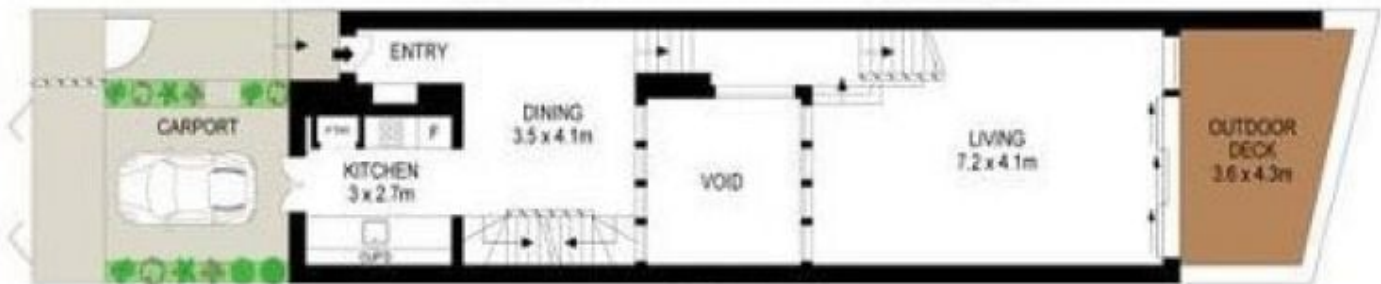
JT ALLEN



FIRST FLOOR



FIRST FLOOR



GROUND FLOOR



LOWER GROUND FLOOR

0 1 2 3 4 5
SCALE (METRES)
PLAN SHOWS ONLY INDICATION OF OFFSET. DIMENSIONS ARE APPROXIMATE



18B HARRIS STREET

PADDINGTON