

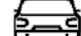




31/6 Trelawney Street, Woollahra

3  2  2 

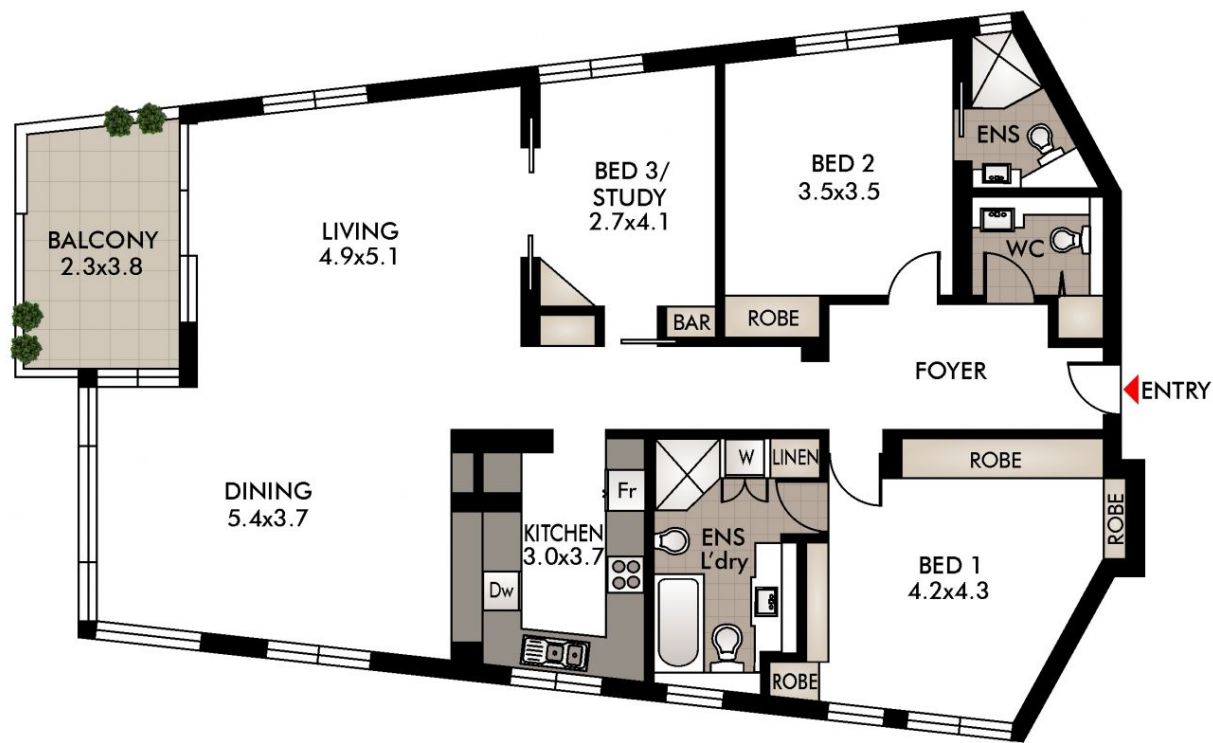
Luxurious Apartment Captivating Views From Every Room,
Exclusive Woollahra Address

Situated on the 11th floor, this spacious Three-bedroom apartment offers spectacular and expansive views across Sydney Harbour and beyond. Set in the prestigious and highly sought after 'Quirang' complex, it is bathed in northerly sunshine, offers house-like proportions and architecturally designed interiors. Just a short stroll to Queen Street's trendy shops and restaurants within easy reach of Edgecliff and Bondi Junction, ideal for low maintenance lifestyle seekers.

SOLD

View
As advertised or
By appointment

Joshua Allen
0404 184 158



This diagram is for illustrative purpose only. All reasonable care has been taken in the preparation, but no warranty is given to the accuracy of the information. This document does not constitute any part of any offer or contract. Dimensions shown are approximate only. Prospective purchasers must rely on their own enquiries.



31/6 TRELAWNEY ST
WOOLLAHRA