
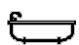




## 8/275 Edgecliff Road, Woollahra

3  2  1 

### Spacious Three Bedroom Townhouse Situated in Exclusive Enclave

Located in the sought after 'Kew Gardens' complex this spacious north facing double storey townhouse offers an abundance of natural light with a low maintenance living.

This private home offers over 200sqm of indoor/outdoor living, with a spacious living area flowing effortlessly onto an elevated terrace overlooking the district with water glimpses. The ground floor also incorporates an entrance hall, study and guest toilet/laundry.

Upstairs accommodates three large bedrooms, including a spacious master bedroom, with a stunning Juliette balcony and walk in wardrobe leading onto an ensuite, as well as a second bathroom with a bath and shower.

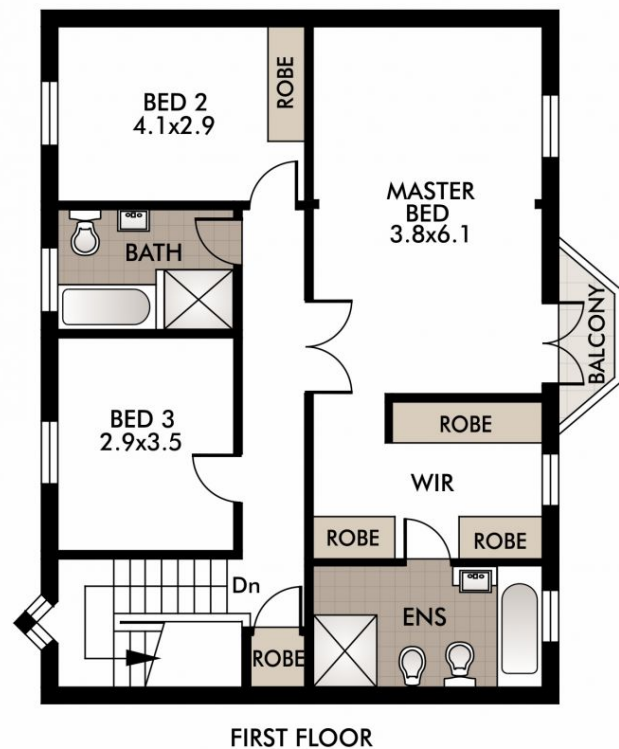
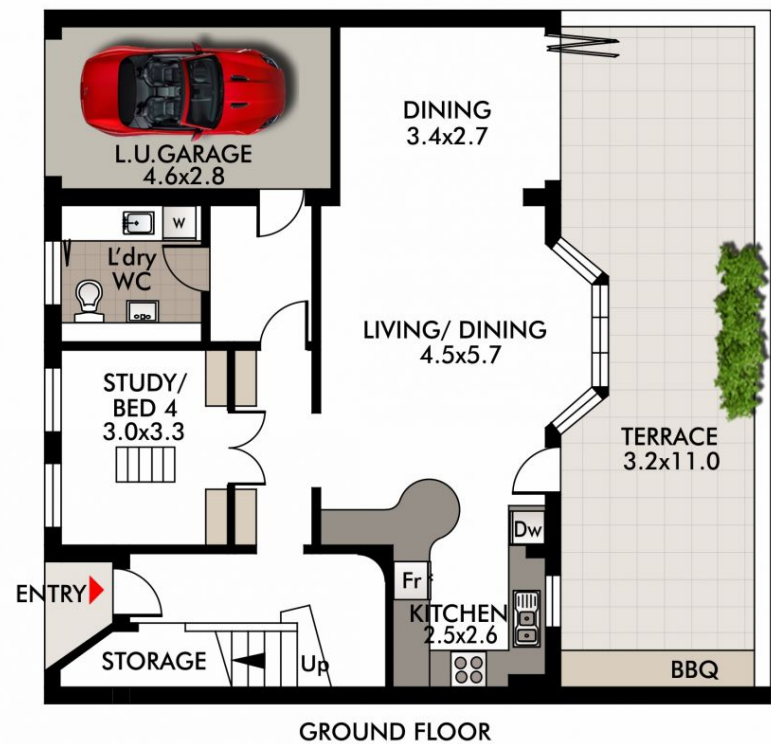
This property also features;

SOLD

View

As advertised or  
By appointment

Joshua Allen  
0404 184 158



This diagram is for illustrative purpose only. All reasonable care has been taken in the preparation, but no warranty is given to the accuracy of the information. This document does not constitute any part of any offer or contract. Dimensions shown are approximate only. Prospective purchasers must rely on their own enquiries.



8/275 EDGECLIFF RD  
WOOLLAHRA