



7/22 Etham Avenue, Darling Point

4  3  1 

Duplex Garden Apartment With Harbour Views

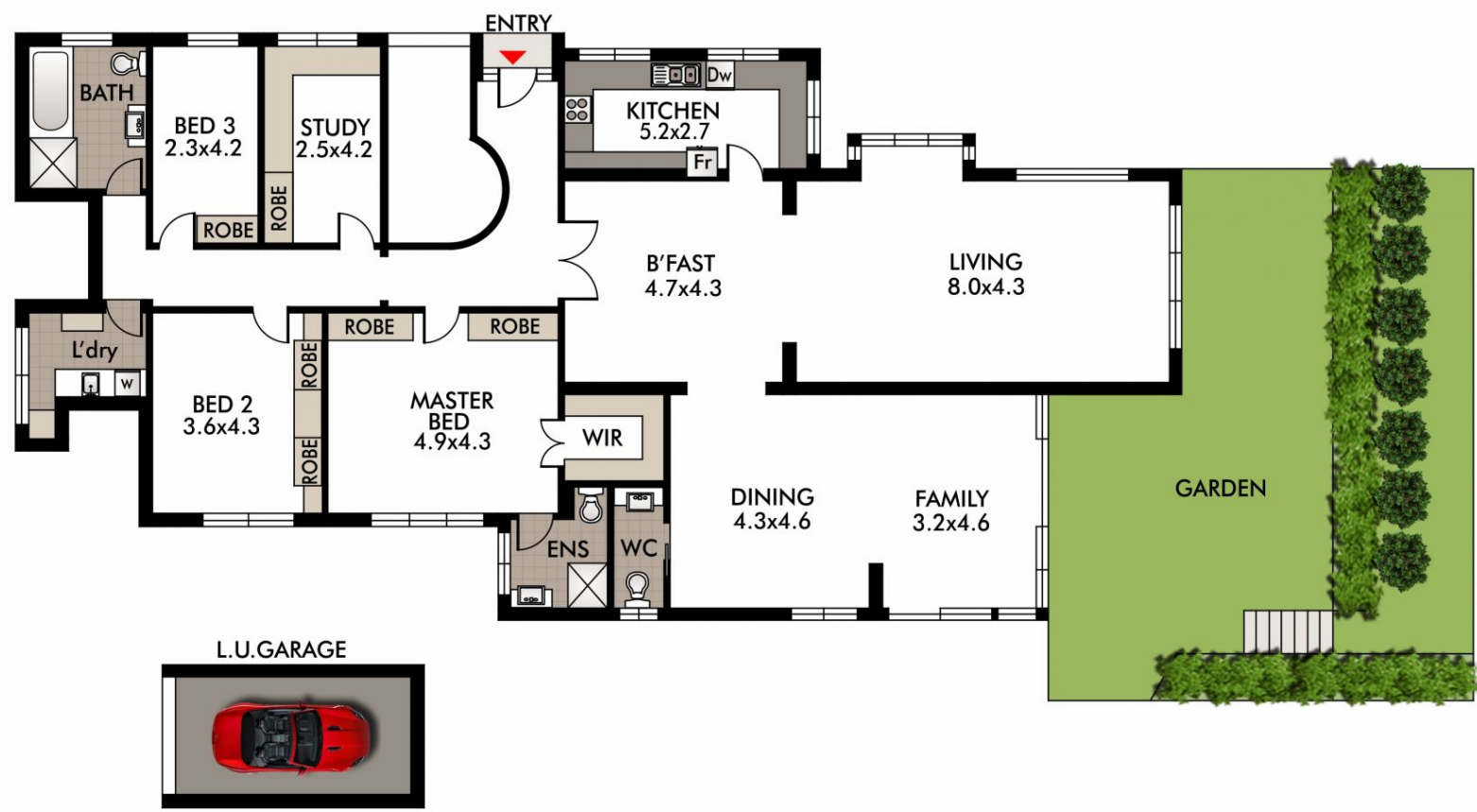
Occupying over 270sqm of internal and external space, this charming oversized residence presents a four-bedroom layout with an expansive garden area and harbour views throughout. This unique home features house-like proportions, high ceilings with formal and informal living spaces, private garden, and views from almost every room. Located in a boutique well-maintained security building with no common walls and one other residence above.

Set within an exclusive blue-ribbon enclave, this luxurious four-bedroom apartment is within short proximity to the City, Double Bay Village, Rushcutters Bay, local eateries and cafes, prestigious Sydney Schools and transportation.

SOLD

View
As advertised or
By appointment

Joshua Allen
0404 184 158



This diagram is for illustrative purpose only. All reasonable care has been taken in the preparation, but no warranty is given to the accuracy of the information. This document does not constitute any part of any offer or contract. Dimensions shown are approximate only. Prospective purchasers must rely on their own enquiries.



7/22 ETHAM AVE
DARLING POINT