



1105/73 Victoria Street, Potts Point

1 

1 

1 

Innovatively Customised Urban Sanctuary With City & Bridge Backdrop

Set at the prized harbour end of tree-lined Victoria Street and commanding fabulous day and night views of the CBD, Royal Botanic Gardens, Opera House, Harbour Bridge and Woolloomooloo Bay; this spacious 1 bedroom apartment is the ultimate Sanctuary!

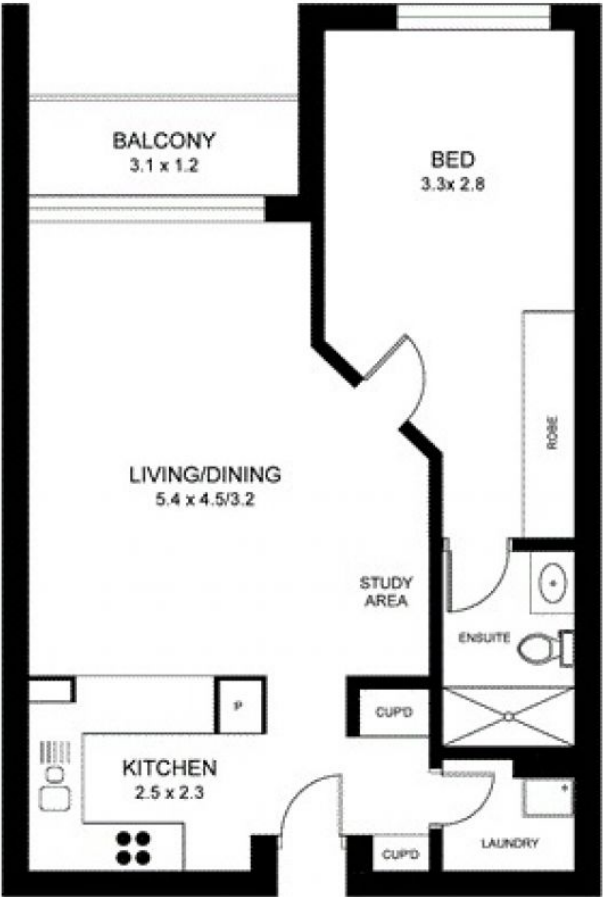
***Tenanted property inspections as scheduled only**

Features include:

LEASED

View
As advertised or
By appointment

Joshua Allen
0404 184 158



0 3 M

PLANS ARE INDICATIVE OF LAYOUT AND SHOULD NOT BE TAKEN AS AN EXACT REPRESENTATION OF THE PROPERTY. DIMENSIONS AND ASPECT ARE APPROXIMATE.