



222-234 Bondi Road, Bondi

11 16 0

Two apartment Blocks To Be Sold In One Line -
Commercial and Residential Offering In Landmark Bondi
Position

A once in a lifetime offering in an iconic location, 222-234 Bondi Road and 1 Wellington Street are two historic landholdings to be sold together in one line.

Commanding a prominent corner position, they hold over 1,384sqm of land combined. Zoned R3 medium density, the properties present incredible potential for a mixed use development with dual street frontage, prestigious new architectural design (subject to council approval) or strong investment.

Breakdown of the two buildings includes:

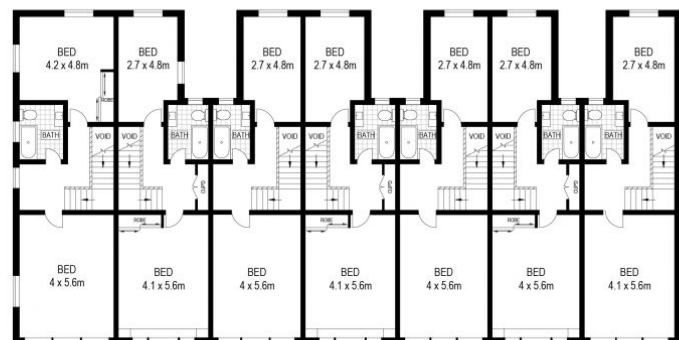
222- 234 Bondi Road features:

1 Wellington Street features:

SOLD

View
As advertised or
By appointment

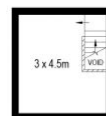
Joshua Allen
0404 184 158



FIRST FLOOR



GROUND FLOOR



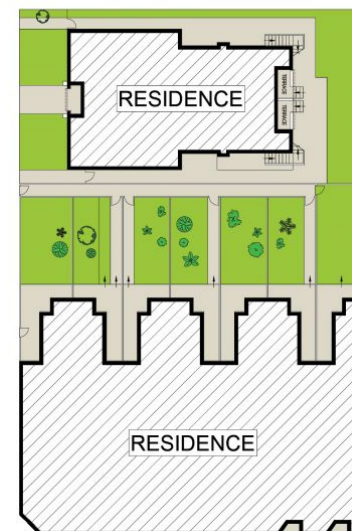
LOFT



FIRST FLOOR



GROUND FLOOR



SITE PLAN
(NOT TO SCALE)

0 1 2 3 4 5

Scale in metres. Indicative only. Dimensions are approximate. All information contained herein is gathered from sources we believe to be reliable. However we cannot guarantee its accuracy and interested persons should rely on their own enquiries.

222 Bondi Road, Bondi

