



13/509-511 New South Head Road, Double Bay

3  2  2 

FLAWLESS NORTH FACING DESIGNER APARTMENT EPITOMISES CAREFREE DOUBLE BAY LIVING

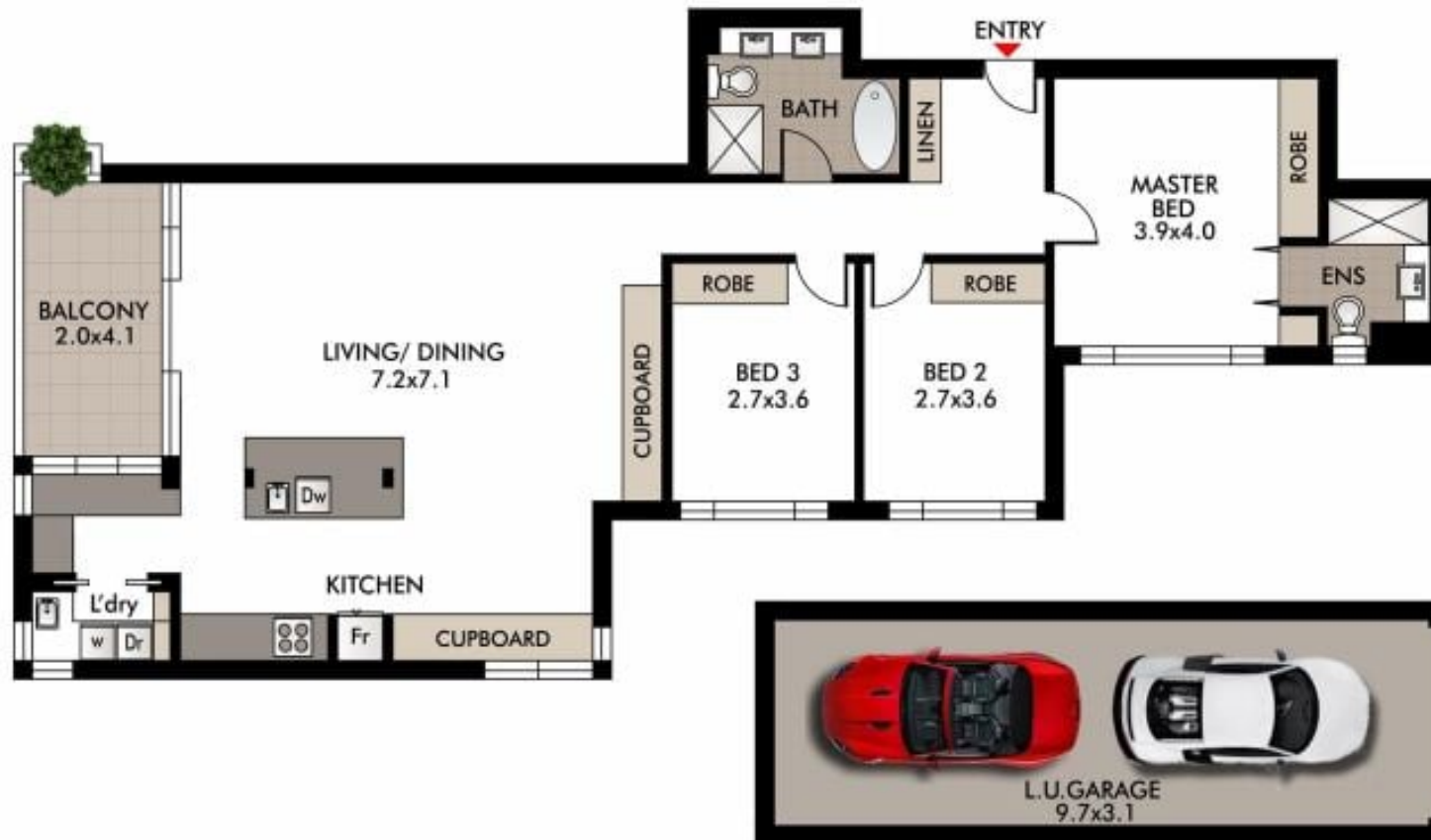
With a bespoke designer renovation and harbour vistas to Clark Island taking centre stage, this oversized apartment perfectly reflects the high end feel of its Double Bay address. No expense has been spared to ensure luxury, with a carefully sourced palette of interiors on display in the beautiful open floorplan.

Stunning living and dining areas provide plenty of space to relax in private or entertain guests, while floor-to-ceiling glass doors entice out to a sunny balcony poised to enjoy the view.

SOLD

View
As advertised or
By appointment

Joshua Allen
0404 184 158



This diagram is for illustrative purpose only. All reasonable care has been taken in the preparation, but no warranty is given to the accuracy of the information. This document does not constitute any part of any offer or contract. Dimensions shown are approximate only. Prospective purchasers must rely on their own enquiries.



13/509 New South Head Rd
DOUBLE BAY