



13/509-511 New South Head Road, Double Bay

3  2  2 

## High End North Facing 3 Bedroom Apartment

Elevated in an immaculate complex, this oversized apartment perfectly reflects the high end feel of its Double Bay address. No expense has been spared to ensure luxury, with a carefully sourced palette of interiors on display in the beautiful open floorplan.

Stunning living and dining areas provide plenty of space to relax in private or entertain guests, while floor-to-ceiling glass doors entice out to a sunny balcony poised to enjoy the view.

Enjoy Redleaf Beach a short walk one way and the cosmopolitan delights of Double Bay a stroll to the other. The ferry wharf is footsteps from your front door, as are buses bound for the CBD, esteemed schools, Double Bay Beach and Kiaora Road's vibrant shopping precinct.

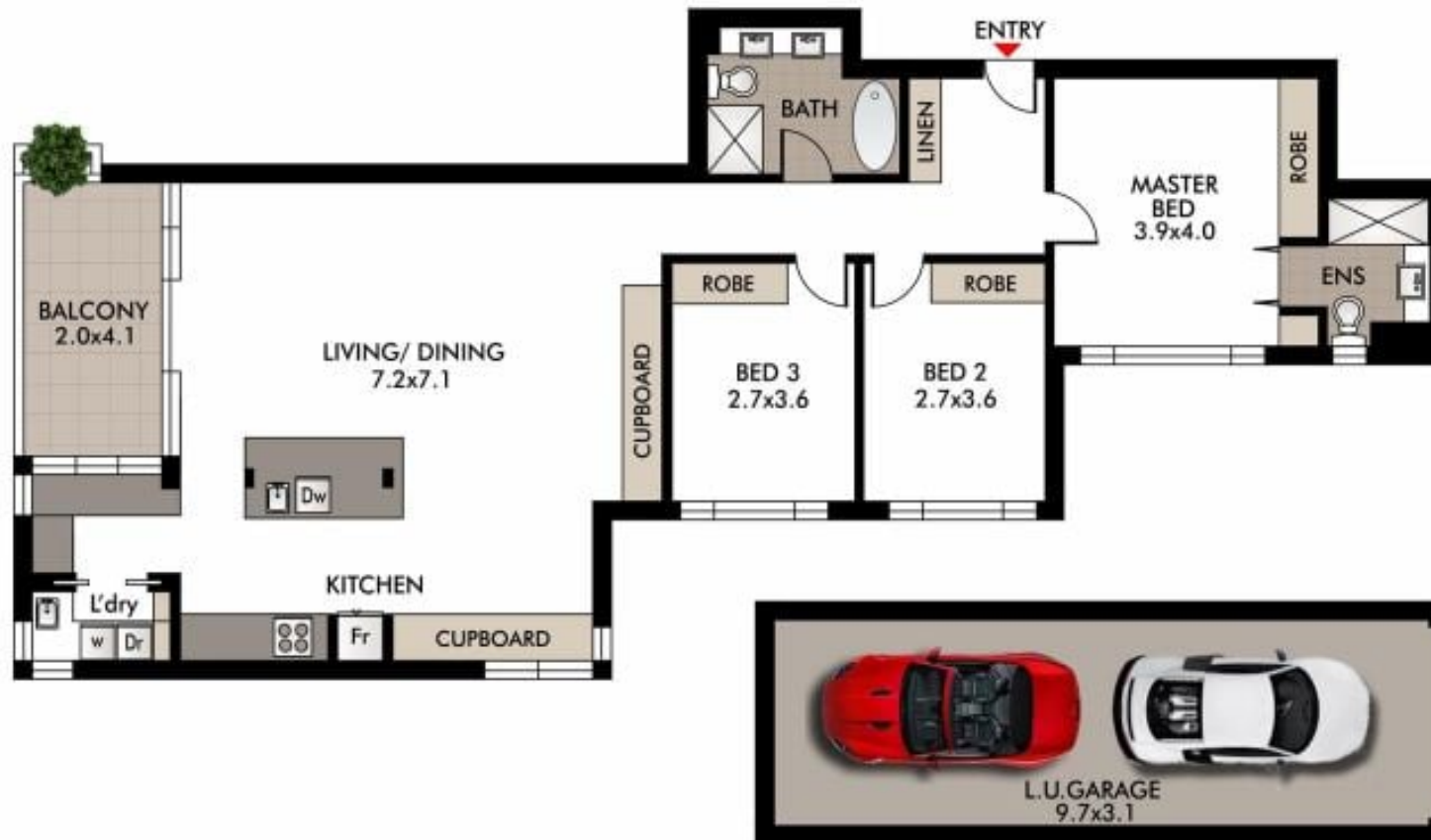
Features include:

LEASED

View

As advertised or  
By appointment

Joshua Allen  
0404 184 158



This diagram is for illustrative purpose only. All reasonable care has been taken in the preparation, but no warranty is given to the accuracy of the information. This document does not constitute any part of any offer or contract. Dimensions shown are approximate only. Prospective purchasers must rely on their own enquiries.



13/509 New South Head Rd  
DOUBLE BAY