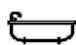




59 Onslow Street, Rose Bay

4 

2 

4 

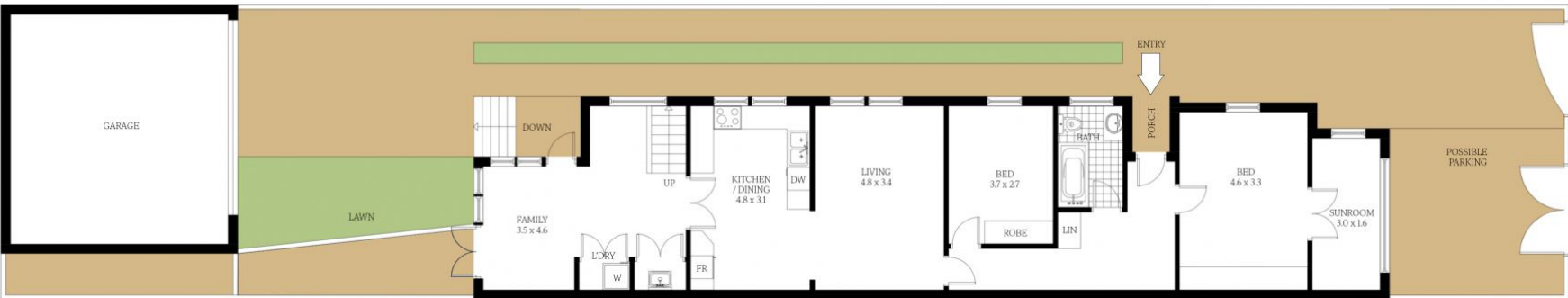
A family home in a prized locale

A dual level home with a bright aspect in a sought-after location featuring well proportioned interiors and classic quality finishes, this is the perfect family home in a tree-lined street.

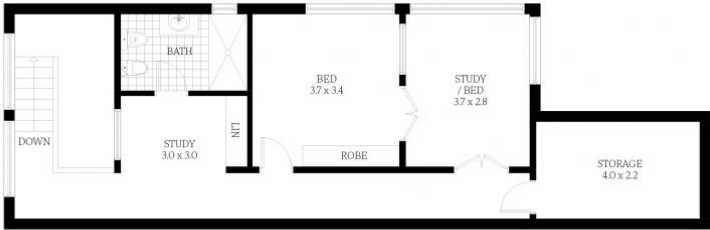
SOLD

View
As advertised or
By appointment

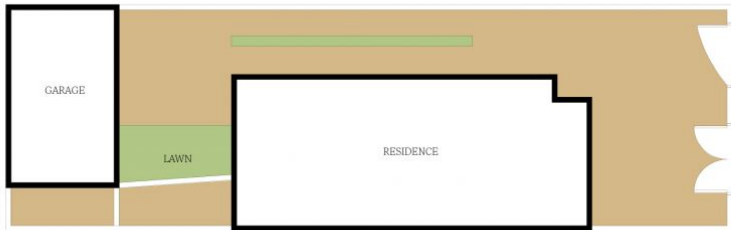
Joshua Allen
0404 184 158



GROUND LEVEL



FIRST LEVEL



SITE PLAN



Scale in metres. Indicative only. Dimensions are approximate. All information contained here in is gathered from sources we believe to be reliable. However we cannot guarantee its accuracy and interested person should reply on their own enquiries.