



9/7 Military Road, Watsons Bay

2 

1 

2 

Idyllic tropical oasis in a harbourside location

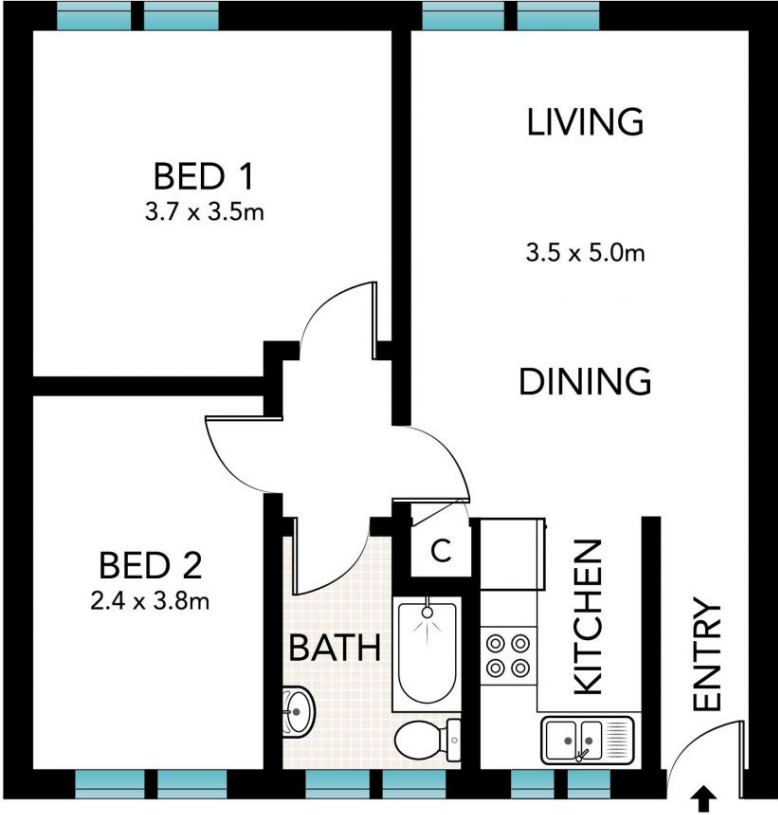
A fantastic location in the historic heart of Watsons Bay village sets the scene for a tranquil harbourside lifestyle in this boutique apartment. Only a short stroll to Robertson Park, Watsons Bay Beach and Camp Cove, this two-bedroom apartment offers you your own piece of paradise. A superb entry to one of Sydney's most tightly held peninsula addresses, this home is surrounded by coastal reserves and sheltered harbour beaches with the city ferry just 300m from the door and exclusive rare tandem parking.

SOLD

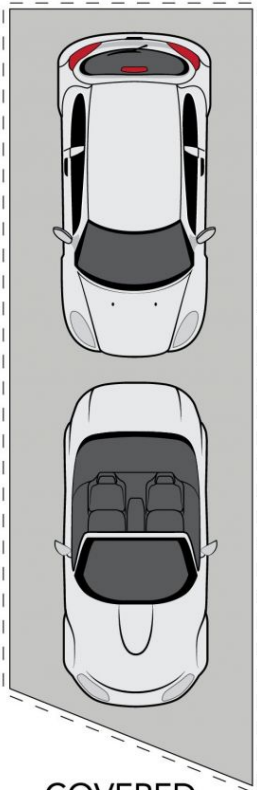
View
As advertised or
By appointment

Joshua Allen
0404 184 158

Ryan Rubinstein
0499 008 786



SECOND LEVEL



COVERED
CAR SPACE
2.5 x 7.0m



GROUND LEVEL



Scale in metres. Indicative only. Dimensions are approximate. All information contained herein is gathered from sources we believe to be reliable. However, we cannot guarantee its accuracy and interested persons should rely on their own enquiries.