
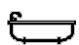





4/45 Wolseley Road, Point Piper

3  3  1 

Stunning whole floor home with breathtaking views

This stunning apartment captures uninterrupted panoramic views across Double Bay, the striking city skyline, Harbour Bridge and Opera House, stretching all the way to North Sydney.

Occupying an entire floor of a boutique building in a prestigious Wolseley Road address, the residence is impeccably presented, with sweeping open plan interiors flowing to an entertainer's balcony with breathtaking outlooks.

Displaying house-like proportions, no common wall, and effortless level access, it's footsteps from Redleaf Beach, Rose Bay foreshore, and Double Bay Village.

Co-Agent:

Ray White | Adam Reichman 0418 479 904

SOLD

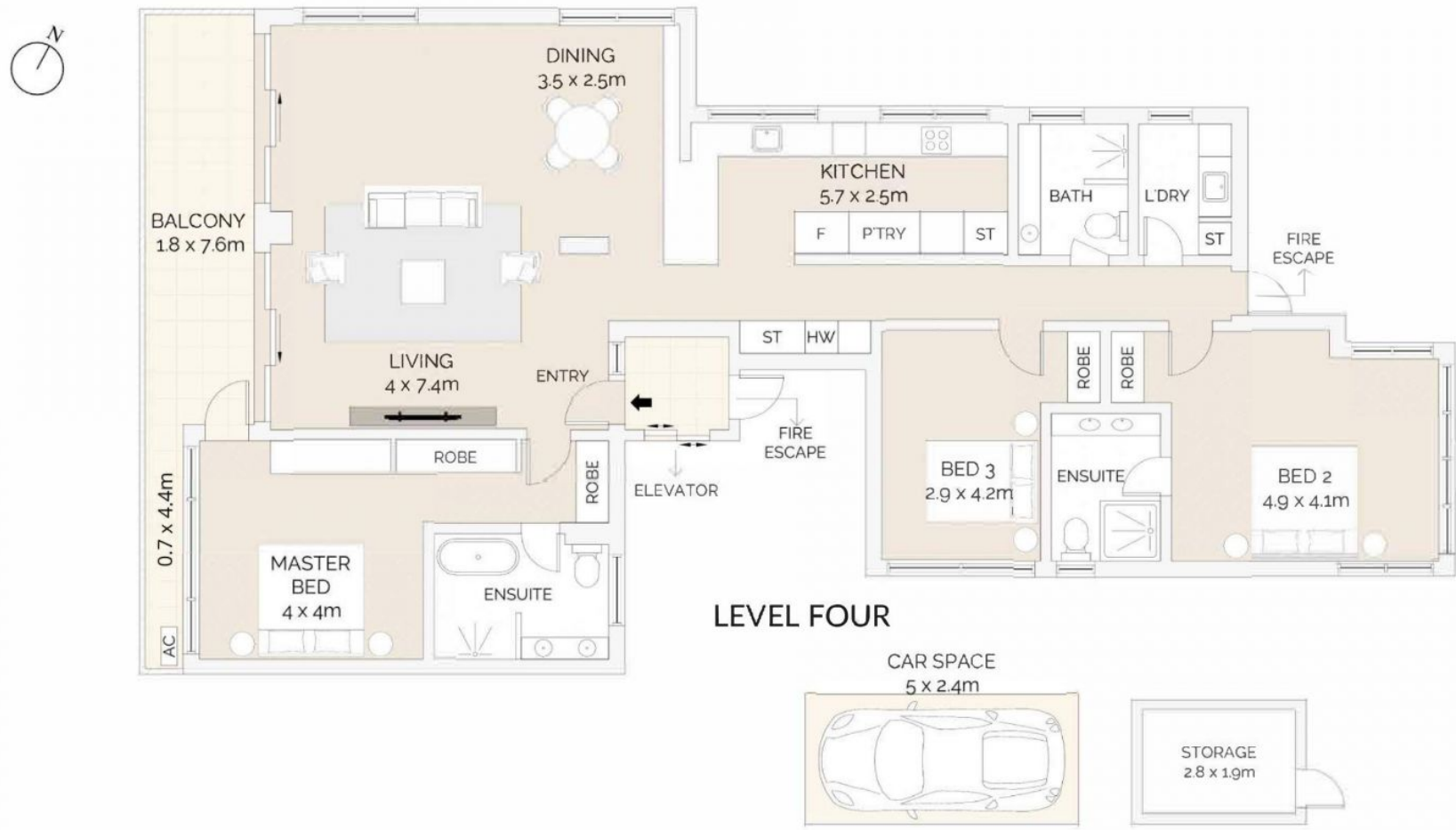
View

As advertised or  
By appointment

Joshua Allen  
0404 184 158

Ryan Rubinstein  
0499 008 786

4/45 Wolseley Road, Point Piper



LEVEL FOUR



Scale in metres. Indicative only. Dimensions are approximate. All information contained herein is gathered from sources we believe to be reliable. However we cannot guarantee its accuracy and interested persons should rely on their own enquiries.