



20 Park Street, Clovelly

4  1  0 

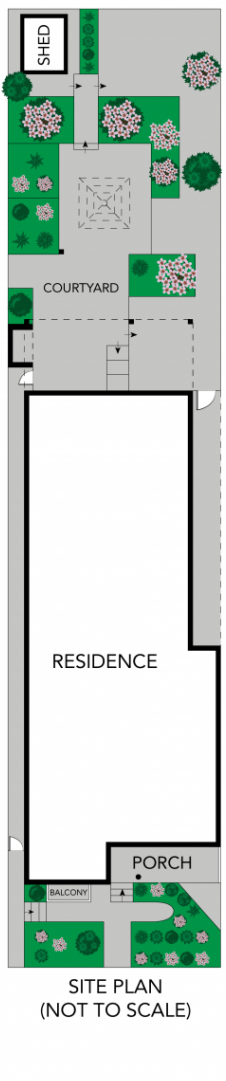
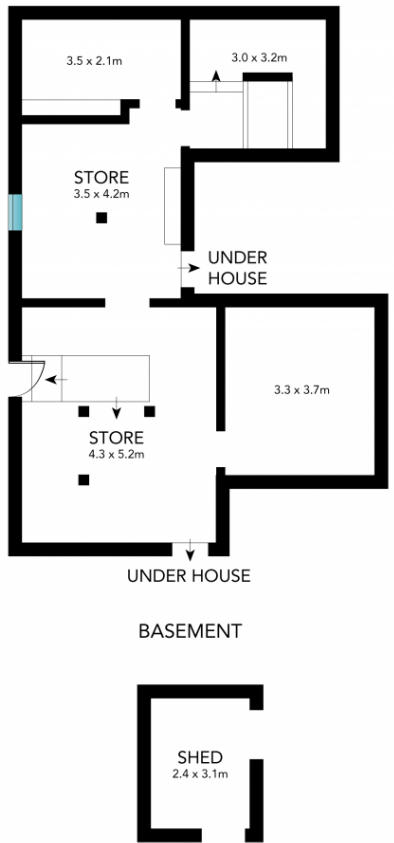
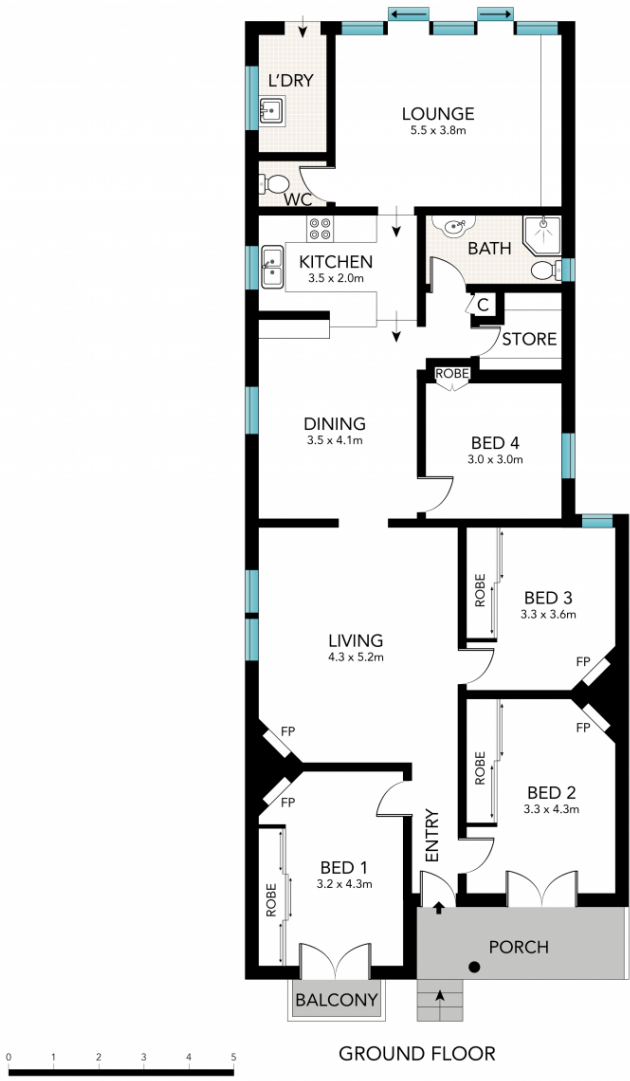
Charming cottage with potential to renovate or rebuild, just metres from the surf and sand

Claiming a prized position just metres from beautiful Clovelly Beach, 20 Park Street is a rare purchase opportunity. The cottage is well maintained and flexible in design, making it an ideal option for a growing family, investor or savvy couple seeking a quiet beachside lifestyle. While easily liveable as is, it also presents superb future scope to redesign or capitalise on pretty ocean vistas with a second storey (STCA).

SOLD

View
As advertised or
By appointment

Joshua Allen
0404 184 158



Scale in metres. Indicative only. Dimensions are approximate. All information contained herein is gathered from sources we believe to be reliable. However, we cannot guarantee its accuracy and interested persons should rely on their own enquiries.