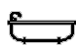




8 Mears Avenue, Randwick

4 

3 

0 

Rare opportunity to secure a double frontage Victorian terrace

Quietly nestled in a leafy pocket of Randwick, this 1886 rare double frontage Victorian terrace has been thoughtfully redesigned and renovated to blend contemporary finishes with refined period features for ultimate comfort and luxury.

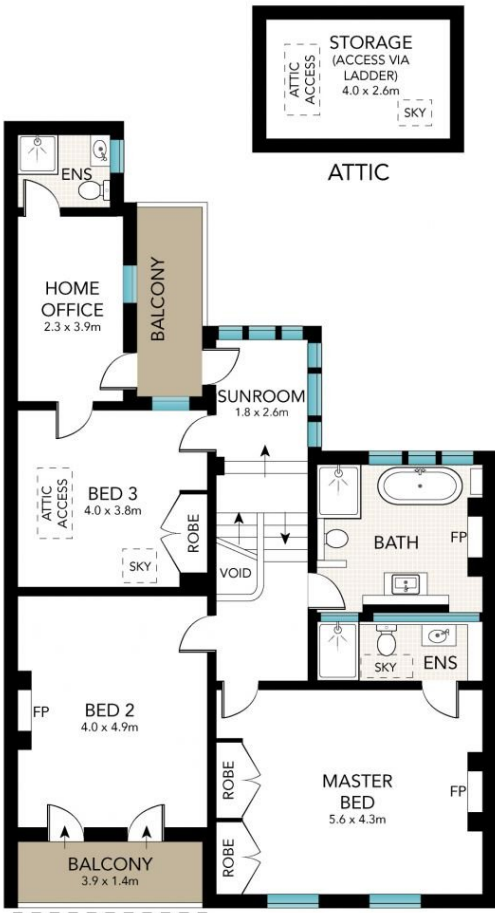
SOLD

View
As advertised or
By appointment

Joshua Allen
0404 184 158



GROUND FLOOR



FIRST FLOOR



SITE PLAN (NOT TO SCALE)



Scale in metres. Indicative only. Dimensions are approximate. All information contained herein is gathered from sources we believe to be reliable. However, we cannot guarantee its accuracy and interested persons should rely on their own enquiries.