



8/202 Jersey Road, Paddington

2 

2 

2 

Modern 2 or 3 Bed Living in Exclusive 'The Stables'

"The Stables" in Sydney stands as a testament to successful historical conversions, a landmark security block of only 9 units. While preserving its rich historical links, this architectural gem offers innovative features for a sophisticated 21st-century lifestyle. Developed by the renowned Bill Shipton, celebrated for his meticulous detailing and no-expense-spared refurbishments, this residence is a true masterpiece of classic charm and contemporary elegance.

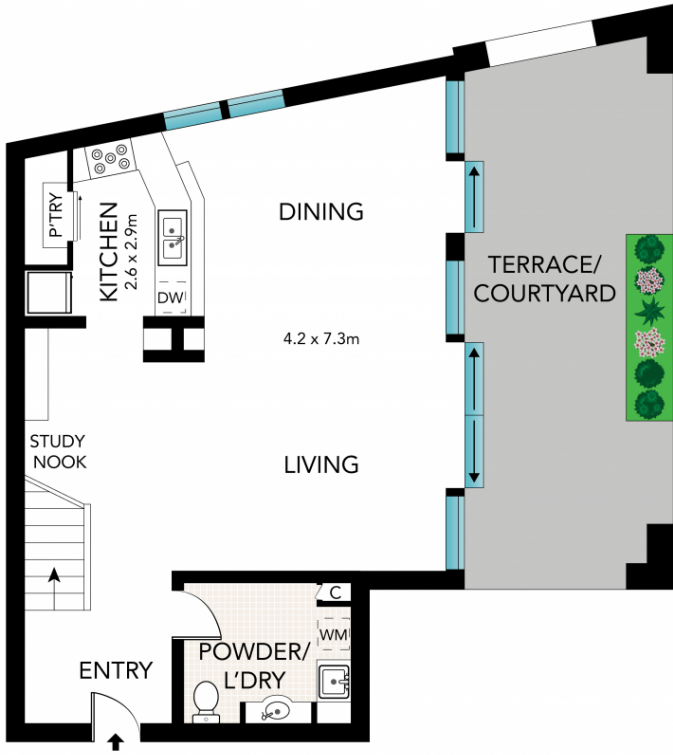
This classic-contemporary apartment features open-plan living and dining areas, a well-equipped gas kitchen, bedrooms with built-in wardrobes, and main with ensuite. The apartment also includes a laundry with storage and a secure garage via level lift access.

SOLD

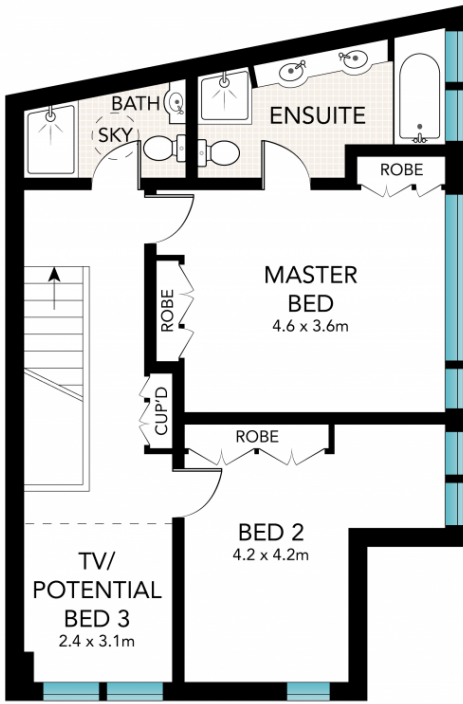
View
As advertised or
By appointment

Joshua Allen
0404 184 158

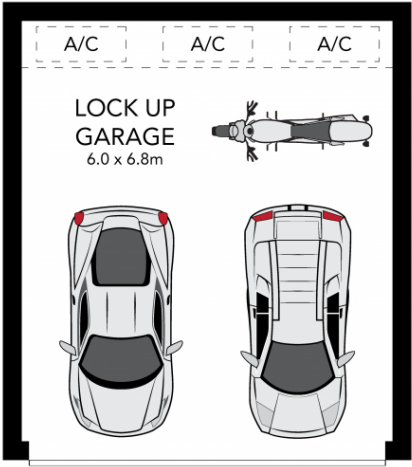
Ryan Rubinstein
0499 008 786



LEVEL ONE



LEVEL TWO



BASEMENT



Scale in metres. Indicative only. Dimensions are approximate. All information contained herein is gathered from sources we believe to be reliable. However, we cannot guarantee its accuracy and interested persons should rely on their own enquiries.