



6/44-46 Beauchamp Road, Hillsdale

3 

2 

3 

Modern Contemporary Townhouse at the Rear of Complex

This multi-level townhouse, is a hidden gem situated at the rear of a sought-after complex. Featuring green outlooks and complete privacy this home is ready to move straight in and enjoy the conveniences of parks, beaches, transport and shopping.

Abundant in space and natural light, with an open-plan living and dining area, ample room for relaxation and entertainment, with arched high ceilings and modern contemporary designs throughout. Double sliding glass doors lead to the oversized patio area, seamlessly blending indoor and outdoor living.

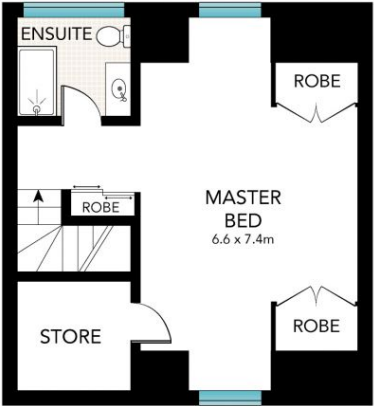
SOLD

View
As advertised or
By appointment

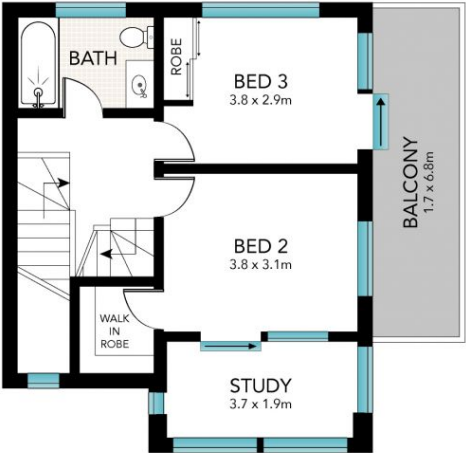
Joshua Allen
0404 184 158



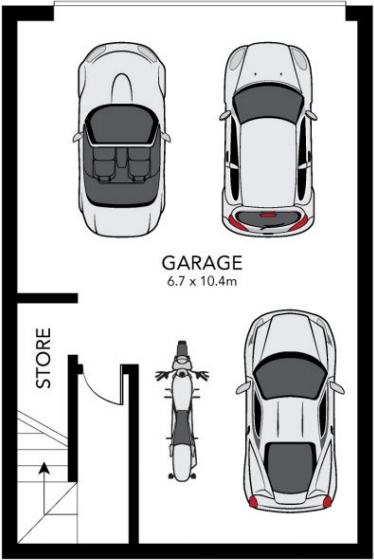
GROUND LEVEL



LEVEL TWO



LEVEL ONE



BASEMENT



Scale in metres. Indicative only. Dimensions are approximate. All information contained herein is gathered from sources we believe to be reliable. However, we cannot guarantee its accuracy and interested persons should rely on their own enquiries.

