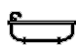




9/7 Military Road, Watsons Bay

2 

1 

1 

## Newly Renovated Harbourside Apartment

Filled with natural light across an easy-care design, this apartment is fantastically located in the historic heart of Watsons Bay village and sets the scene for a tranquil harbourside lifestyle in this boutique apartment.

### Property Features:

Easy access to public transport including buses and ferry. The building is surrounded by tropical gardens, short walk to parks, sheltered beaches, restaurants and cafes.

To register or book an inspection for this property, please copy and paste the link below:

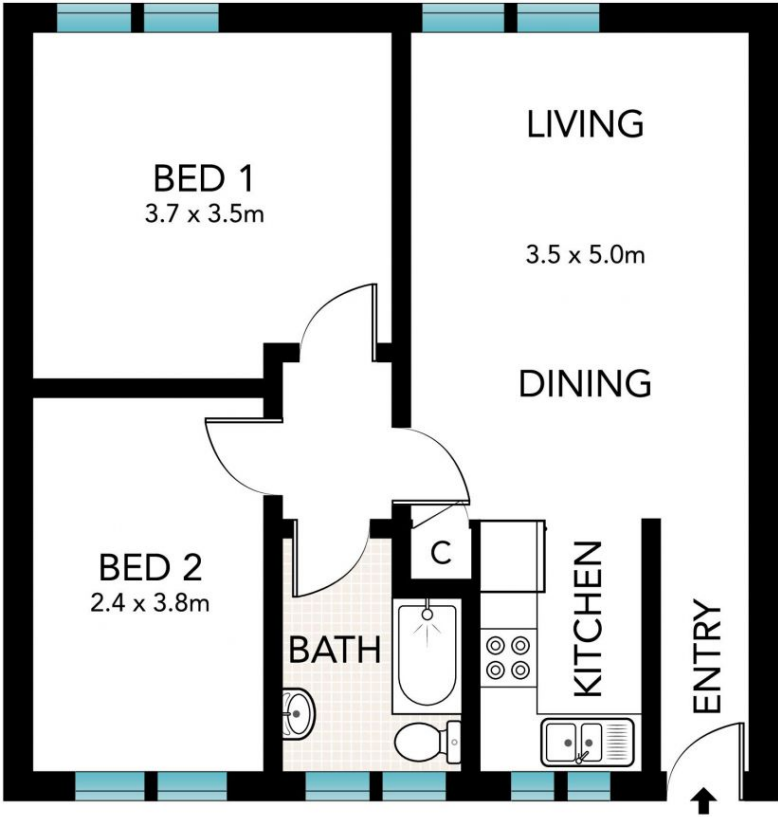
<https://app.snug.com/apply/jtallen>

LEASED

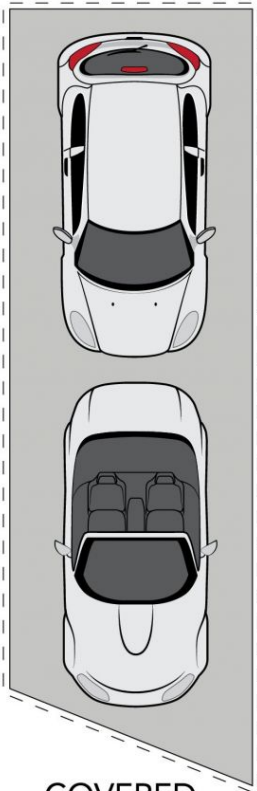
View

As advertised or  
By appointment

Joshua Allen  
0404 184 158



SECOND LEVEL



COVERED  
CAR SPACE  
2.5 x 7.0m



GROUND LEVEL



Scale in metres. Indicative only. Dimensions are approximate. All information contained herein is gathered from sources we believe to be reliable. However, we cannot guarantee its accuracy and interested persons should rely on their own enquiries.