



10 Lea Street, Croydon

4 

2 

3 

Timeless Freestanding Haven of Period Elegance

Nestled in the prestigious and sought-after Malvern Hill Estate, this beautifully renovated and restored Californian bungalow is set on a 683-square-metre corner block. 'The Bungalow' delivers a grand lifestyle with an entrance foyer flowing into a traditional family residence with an opportunity to add your own touches or simply appreciate the beautiful period features. The exterior of the property is surrounded by lush gardens, creating a tranquil and inviting atmosphere.

The superbly covered outdoor terrace, peaceful vegetable garden, and pool offer the perfect space to relax and entertain guests. Very few properties can offer so much in terms of size, character, and opportunity within walking distance of Croydon's village cafes, elite private schools, and the train station.

Features:

- Prestigious North-facing Californian bungalow

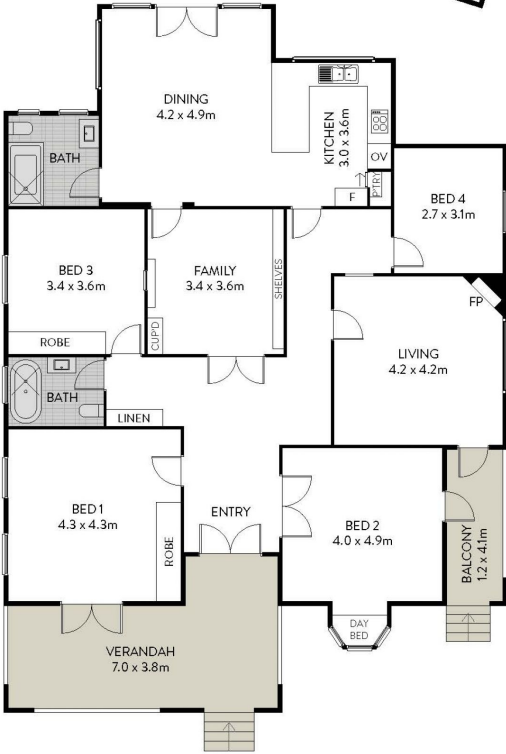
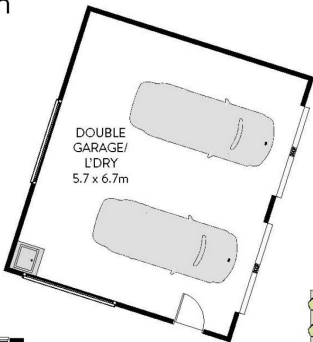
SOLD

View

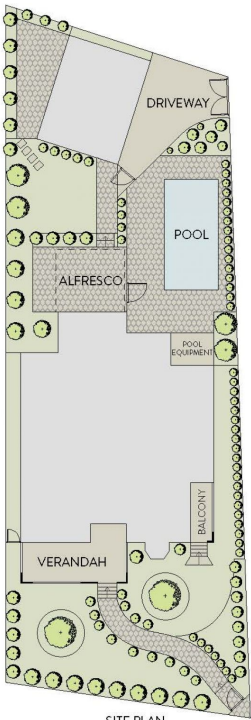
As advertised or
By appointment

Joshua Allen
0404 184 158

10 Lea Street, Croydon



GROUND FLOOR



SITE PLAN



This floor plan is for marketing purposes and is to be used as a guide only. All efforts have been made to ensure its accuracy although interested parties are urged to rely on their own enquiries.