



16/7 Leichhardt Street, Waverley

2  1  1 

Coastal Village Lifestyle with Panoramic Ocean Views

Overlooking the eastern suburbs to the beautiful blue ocean beyond, this wonderfully presented top-floor apartment is a true retreat. Stepping inside, you're greeted by modern interiors bathed in endless light. The open-plan lounge and dining areas take full advantage of the sweeping district panoramas leading to the water, while an elevated position ensures the utmost privacy.

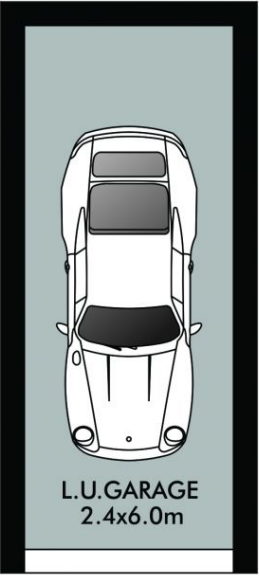
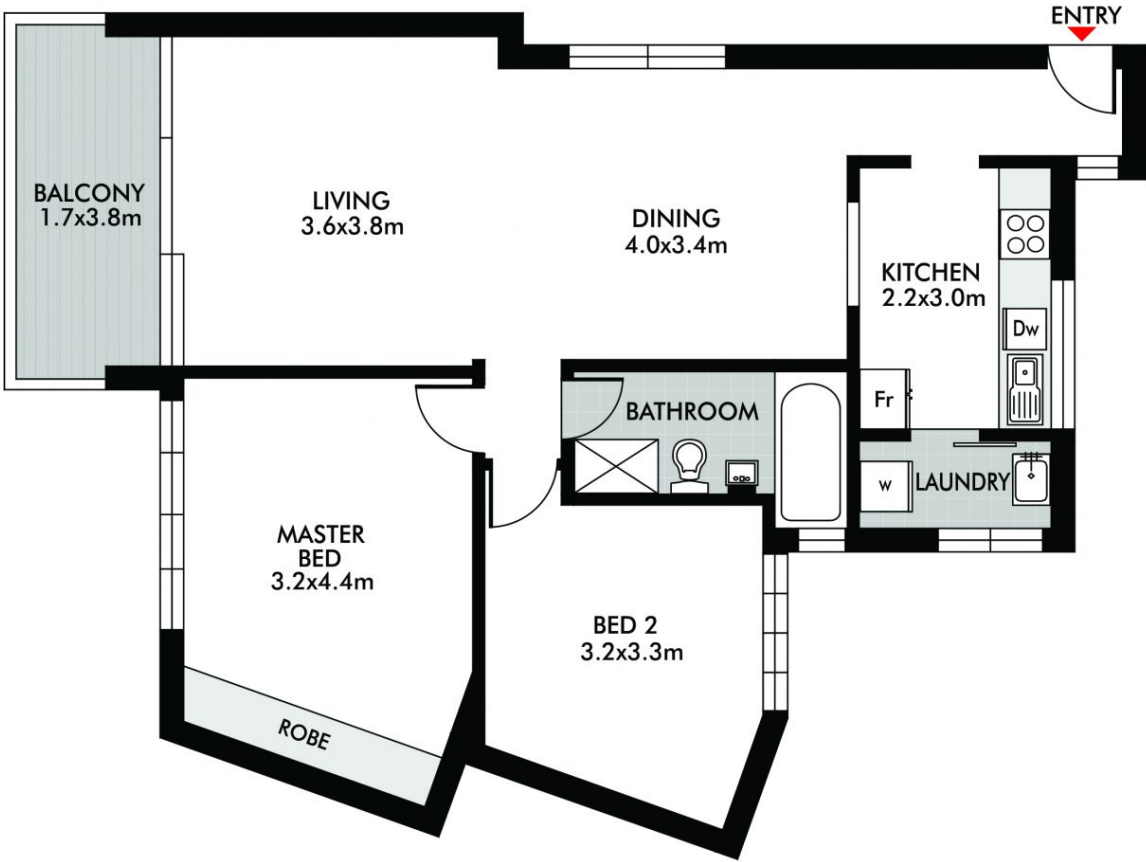
A major location feature of this residence is its proximity to the refreshing surf at both Bronte and Clovelly Beaches and the grand parklands at Centennial Park. Clovelly Road Village is also within walking distance, as are several highly regarded schools. Major shopping is only a short drive away in Bondi Junction.

SOLD

View
As advertised or
By appointment

Joshua Allen
0404 184 158

Ryan Rubinstein
0499 008 786



16/7 Leichhardt Street

This diagram is for illustrative purpose only. All reasonable care has been taken in the preparation, but no warranty is given to the accuracy of the information. This document does not constitute any part of any offer or contract. Dimensions shown are approximate only. Prospective purchasers must rely on their own enquiries.

