



24/372 Edgecliff Road, Woollahra

2 

1 

1 

North Facing Sanctuary in Ideal Location

This two-bedroom apartment is the perfect stepping stone for first-home buyers or a wise addition to an investor's portfolio. Step into a sanctuary of light and elegance, where wide picture windows frame an idyllic north-easterly aspect, casting natural light over fresh white interiors and exquisite parquet floors. The open-plan living and dining space exudes a welcoming atmosphere, seamlessly flowing onto a sun-drenched balcony that invites quiet reflection or alfresco enjoyment.

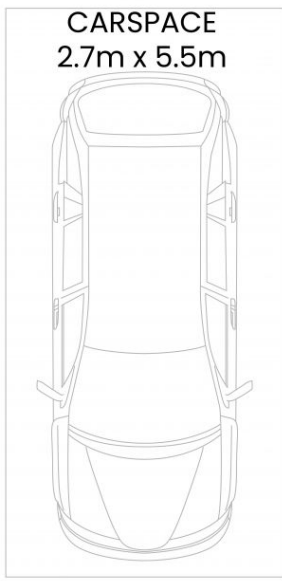
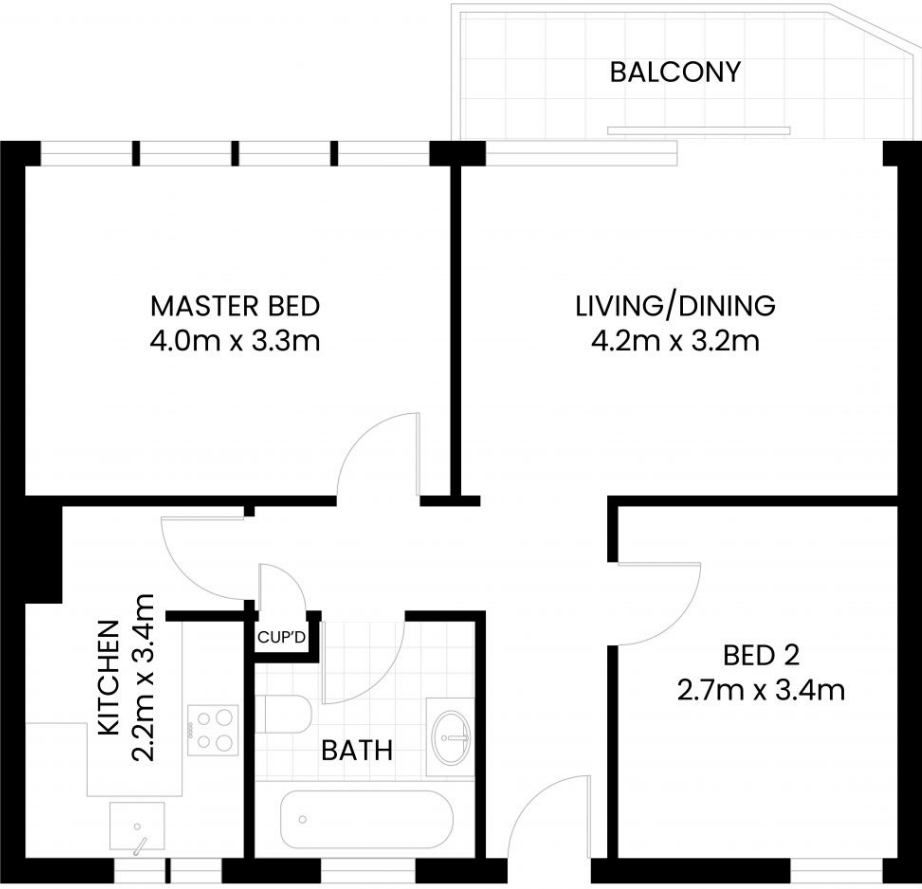
The location couldn't be more ideal, only a short stroll to the vibrant Queen Street village and proximity to Edgecliff Station and Bondi Junction shopping. This apartment not only offers a comfortable lifestyle but is also an astute investment in convenience and style.

SOLD

View  
As advertised or  
By appointment

Joshua Allen  
0404 184 158

Ainslee Cardillo  
0435 399 309



ENTRY  
SECOND FLOOR