
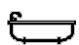





303/22-40 Sir John Young Crescent, Woolloomooloo

1  1  0 

Prized City Pad with Harbour Views

Nestled amidst the vibrant heart of the city, this exquisite one-bedroom apartment presents a remarkable opportunity for first-home buyers and investors alike. Set within the esteemed 'Domain Apartments', the residence epitomises sophistication with its captivating views that stretch over the Domain, sweeping across the city skyline and into the picturesque harbour.

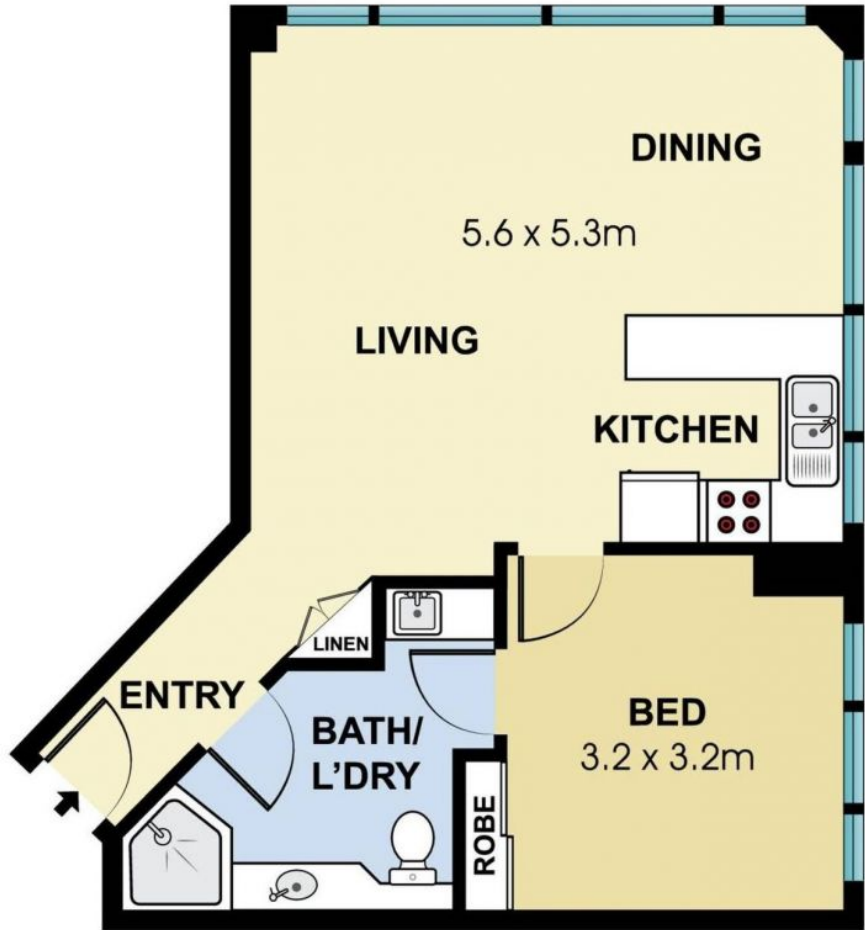
Features

For Sale \$670,000

View

As advertised or
By appointment

Ryan Rubinstein
0499 008 786



Level Three



303/22 Sir John Young Crescent, Woolloomooloo

SCALE (METRES)
Scale in metres. Indicative only. Dimensions are approximate. All information contained here in is gathered from sources we believe to be reliable. However we cannot guarantee its accuracy and interested persons should rely on their own enquiries.