



1/41-43 Benelong Crescent, Bellevue Hill

3  2  2 

North Facing Luxury Oasis with House-Like Proportions

Situated within the exclusive heart of Bellevue Hill, this north-facing boutique garden apartment promises a lifestyle of luxury and entertainment. Relish its sleek house-like interiors that blend with lush green lawns and a sparkling swimming pool.

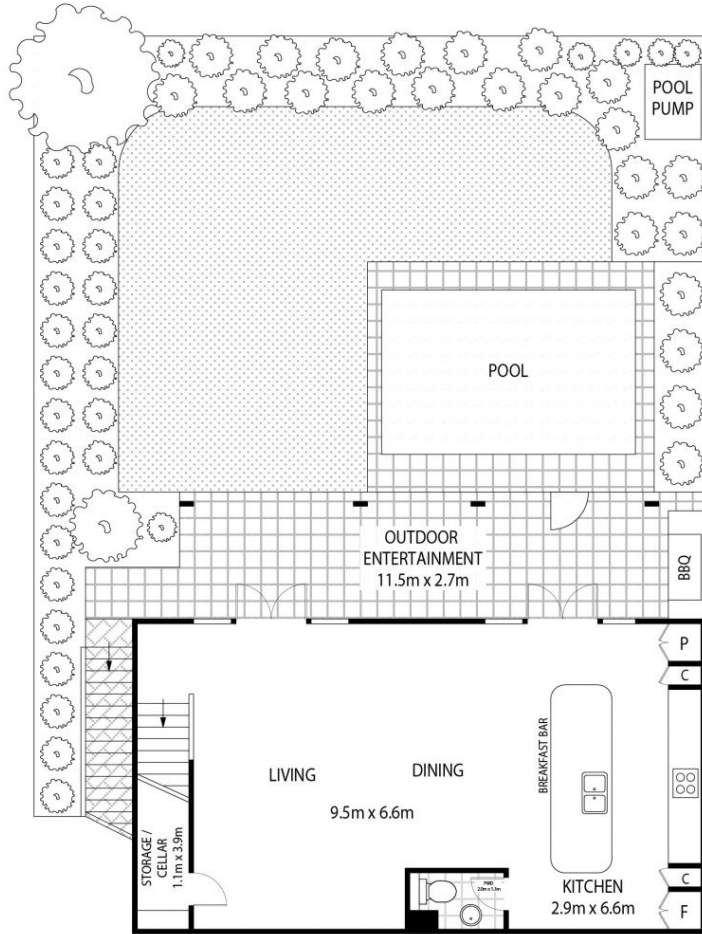
This brand new residence has a breath-taking sense of space and contemporary elegance. Completed with the highest quality of finishes and attention to detail. This prestigious address enjoys effortless access to Bellevue Hill Village amenities, picturesque golf course, Cooper Park, Bondi Beach and the vibrant Bondi Junction Westfield retail hub.

SOLD

View
As advertised or
By appointment

Joshua Allen
0404 184 158

Warren Becker
0404 730 358



LOWER GROUND LEVEL



GROUND LEVEL